



## Identisphere™ ID-Unify™



### Product Highlights

- **Virtual Consolidation of Identities Across Multiple Identity Stores**  
Provides virtual unification of identity data in real-time across a broad range of directories and databases without duplication of data or mass directory synchronization.
- **Rapid Deployment**  
Facilitates rapid deployment, reducing or eliminating the need for application-level integration or customization.
- **Reduces or Eliminates Changes to Applications**  
Provides an LDAP interface to SQL, web services (SOAP/DSML) and other custom data sources enabling a common communication protocol reducing the need to modify applications.
- **Tight integration into Access Policy Management Lifecycle**  
ID-Unify enables consolidation of user identities and policies across multiple identity stores providing an important element in the Access Policy Lifecycle Management process. Unification of identities ensures consistent identity-based enforcement of access policies and tracking of user activities with Applied Identity's ID-Enforce™ solution.

### Are Your Network Users Experiencing an Identity Crisis?

As organizations evolve and grow, it becomes increasingly more challenging to handle the day-to-day activities related to managing user identities and resource access policies. Growth includes activities such as adding new users, new networked resources and applications, new locations, new business units, even integrating new companies (i.e. mergers and acquisitions). Additional challenges to the management of user identities include the day-to-day maintenance activities of keeping up with request for moves, adds and change to users, user groups and their access privileges within the organization.

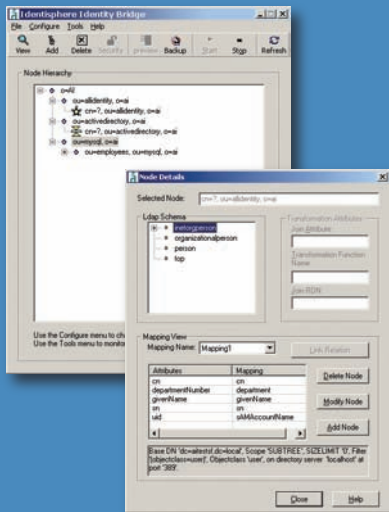
### The Complex Problem of Identity Consolidation

While highly desirable, most large organizations have been unsuccessful in adopting a single identity store vendor. The reasons vary – some have inherited legacy systems that would be cumbersome and costly to convert; others have individual business units or departments that want to manage their own identity resources, making independent decisions. In either case, the lack of identity consolidation has created some complex challenges for IT.

These challenges include:

- The ability to ensure user identities and business policies are consistently applied across multiple identity stores, which reduces an organization's exposure to security risk
- Difficult and time consuming to demonstrate compliance with regulations related to controlling access to sensitive data based on identity, as users may have multiple identities and associated policies in different domains.
- Increased time, resources and cost to deploy directory-aware applications as they are not capable of integrating with heterogeneous identity repositories. These repositories include LDAP stores, RDBMS, flat-file, RACF, etc. As a result, organizations are forced to limit the scope of their implementation; deploy multiple, disparate instances of the application tied to a given directory; or significantly increase their investment in additional resources.
- Difficult to adopt an Access Policy Lifecycle process to achieve consistent enforcement of access to sensitive data. IT is forced to rely on manual efforts to unify identities and policies thereby running the risk of creating security holes which may be difficult to detect or correct.

Identisphere ID-Unify creates virtual identity and access policy consolidation across multiple disparate identity stores, reducing security and regulatory compliance risks and simplifying management.



ID-Unify's graphical user interface simplifies deployment and management in complex network environments

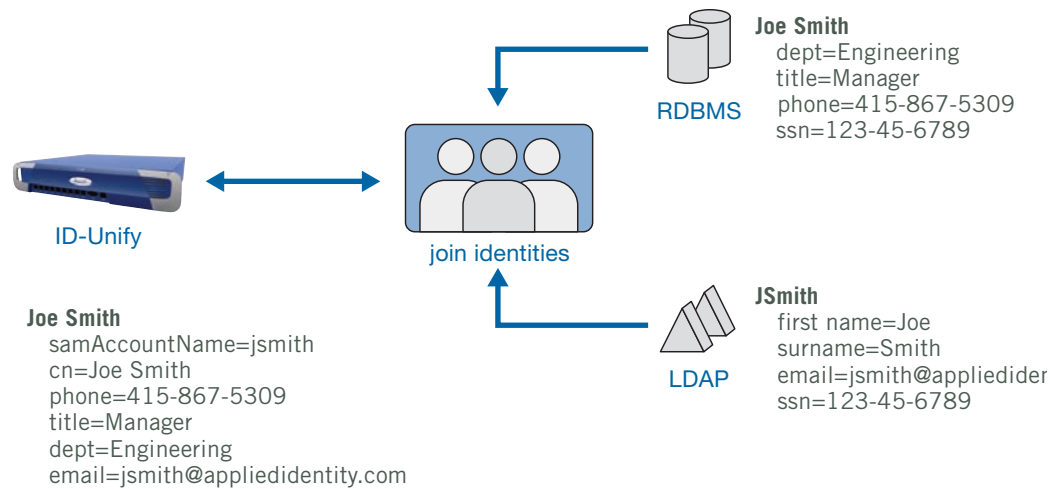
## Identity Consolidation is the Answer...the Question is How?

An obvious answer to managing multiple and often disparate identity stores is to centrally consolidate identities and identity management. This is not a new concept and there are two basic approaches to consider, virtual identity consolidation or Meta directories.

Key Features Comparison	Virtual Identity Consolidation	Meta Directories
Centralized source of identity data requiring synchronization with underlying stores		X
Application specific views of identity data without schema changes to underlying data source	X	
Reflects changes to identity data in native data sources in real-time; without synchronization	X	
Automated user provisioning to NOS and email		X
Avoids data ownership issues in large organizations – requires no changes to existing identity stores and processes	X	
Lowest CAPEX and OPEX solution for identity consolidation	X	

## Identity Consolidation via Virtualization – How it Works

ID-Unify enables virtual identity consolidation across multiple and even disparate identity stores and can be installed anywhere in the network. The Identisphere Manager is the graphical user interface for IT to define the data normalization and schema mappings.



### Create Unified User Identities

The first step is for IT to ascertain the identity sources required for consolidation. If the identity stores have discrete user identities, then ID-Unify creates a map aggregating the data within the various identity stores. If the underlying identity stores have multiple instances of a single identity the ID-Unify can join those occurrences into a single identity. ID-Unify includes a graphical user interface for IT to define aggregation and join mappings.

### Data Transformation

In deployments where heterogeneous identity stores, data formats and schema elements differ, ID-Unify virtualizes identities by normalizing data formats and schema elements. Once the associations are created, mapping of identities and attributes occurs automatically based upon the rules applied.

## Applied Identity Solutions

### Identsphere

Identsphere is a line of identity and policy management solutions that enable organizations to consolidate the creation, management and audit of user identity and access policies from a single, or across multiple identity stores.

### Identsphere Manager

Management interface for the creation, implementation and management of access policies utilizing identities. Also provides a central management, audit and reporting interface for Applied Identity's ID-Audit, ID-Unify and ID-Enforce appliances.

### ID-Audit

Provides a central repository of audit data on user behavior and resource usage. Enables the creation of real-time views and historical reports that can be used to create new or refine existing policy.

### ID-Unify

Manages user identities between multiple and disparate identity stores, creating a virtual mapping and normalization of user information.

### ID-Enforce

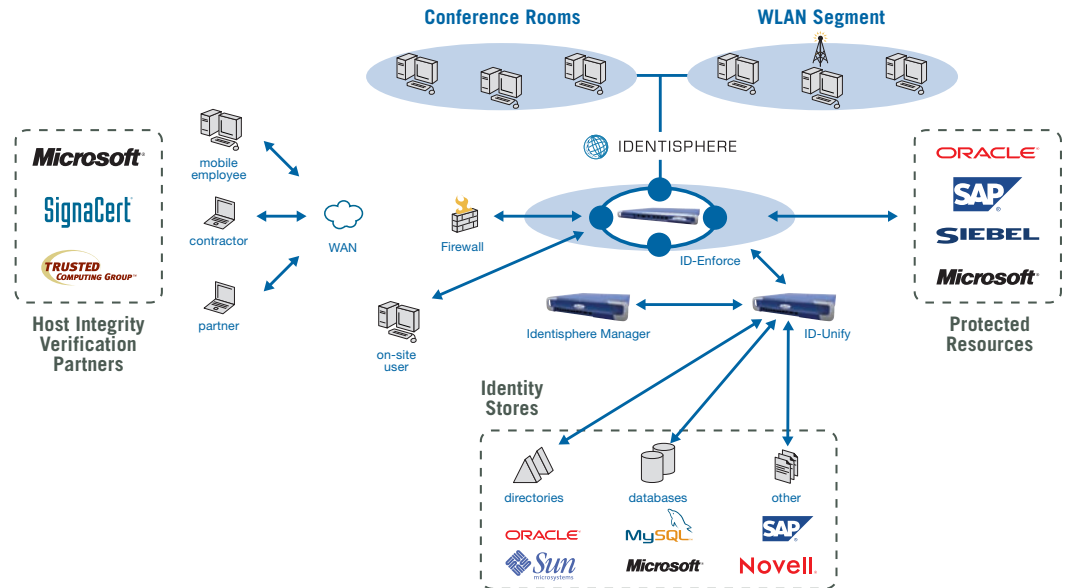
ID-Enforce is a line of network enforcement appliances that enable enterprises to embed identity and access policy control into the network, reducing operating costs and complexity.

### ID-Mark

In environments that require an increased level of accountability and non-repudiation of events, an optional ID-Mark™ client agent can be installed on the client workstation to further enhance security.

## Authentication on Joined Identities

ID-Unify requires "read only" rights into each identity store to which it connects. Using the virtual user identity, a user may authenticate to any of the back end data sources. This means there are no issues with synchronization of data since ID-Unify maps requests directly to the associated identity sources. There are no security issues since the underlying authentication sources are still providing authentication of credentials.



Deployed in conjunction with Applied Identity's ID-Enforce identity aware network access enforcement solution, ID-Unify enables organizations to create a complete Access Policy Lifecycle Management process.

## Identsphere ID-Unify Specifications\*

<b>Operating System</b>	Red Hat Linux , Solaris (2.8, 2.9), Windows (2000, 2003 server)
<b>Identsphere Manager</b>	Requires Microsoft Windows NT/2000/2003/XP
<b>Connectors</b>	LDAP v3 directories (includes Microsoft Active Directory, Microsoft Active Directory Application Mode, SunOne, Oracle Internet Directory, Novell eDirectory, OpenLDAP) ODBC/JDBC (Oracle, SQL Server) RADIUS Custom
<b>Identity Store Software Interfaces</b>	LDAP, SOAP, DSML
<b>Hardware Requirements**</b>	2U Dual XEON Appliance w/ 8 PCI-Express GB LAN 3.2GHz Intel XEON CPU (800MHz FSB) 1GB DDRII 400 RAM ECC & Registered dual rank SEAGATE 80G 3.5" SATA 7KRPM(G)

\*Specifications subject to change without notice.

\*\*Identsphere ID-Unify is also available as a software only solution.

© 2008 Applied Identity, Inc. All rights reserved. Applied Identity, Applied Identity Logo, Identsphere, Identsphere Manager, ID-Audit, ID-Unify, ID-Policy, ID-Mark and ID-Enforce are trademarks of Applied Identity, Inc. All other trademarks included in this document are the property of their respective owners.



456 Montgomery, Suite 400  
San Francisco CA 94104  
Phone: 888.286.7336  
Fax: 415.593.2101  
[www.appliedidentity.com](http://www.appliedidentity.com)



Arrange a **FREE Network Audit Assessment** that will tell you who is accessing what resources and when on your network  
Call 888.286.7336 or email: [sales@appliedidentity.com](mailto:sales@appliedidentity.com)